

# Integrated Gas Systems



Fittings

Valves

Regulators

Filters

Tubing

Integrated Systems

Other Products

Technical Information

# Contents

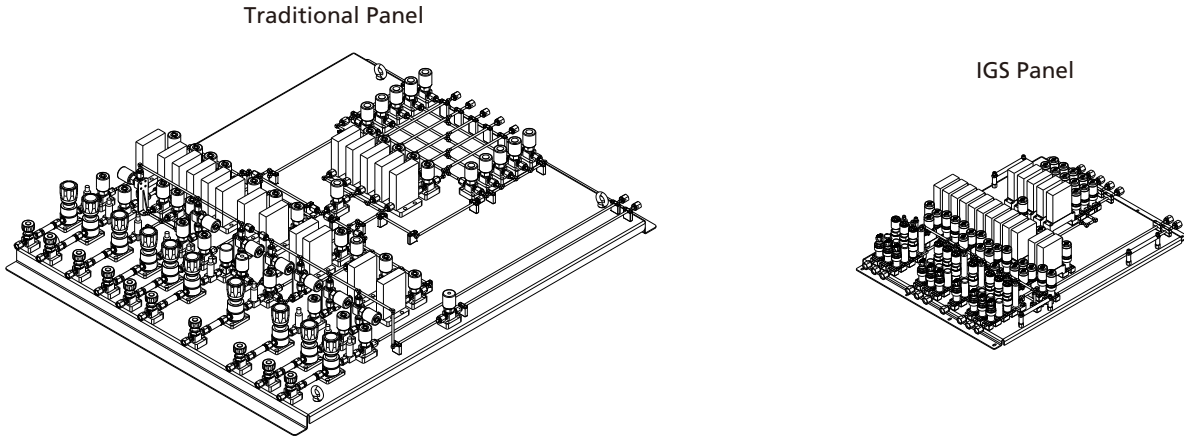
Fittings	<a href="#">Features</a> <span style="float: right;">I-18</span>
Valves	<a href="#">Process Specification</a> <span style="float: right;">I-20</span>
Regulators	<a href="#">Modular System Design Processes</a> <span style="float: right;">I-21</span>
Filters	<a href="#">Parts</a> <span style="float: right;">I-22</span>
Tubing	<a href="#">Substrates ISW Series</a> <span style="float: right;">I-22</span>
Integrated Systems	<a href="#">Substrates ISC Series</a> <span style="float: right;">I-32</span>
Other Products	<a href="#">Sealing Gaskets IWG Series</a> <span style="float: right;">I-45</span>
Technical Information	<a href="#">Sealing Gaskets ICG Series</a> <span style="float: right;">I-47</span>

# Features

FITOK Integrated Gas System is used to control gas in the semiconductor industry, integrating valves, fittings, and other piping components, as well as other necessary measuring and control instruments. FITOK Integrated Gas System uses SEMI compliant surface-mounted components and is modularly designed. While reducing the size of the device, installation and maintenance become easier.

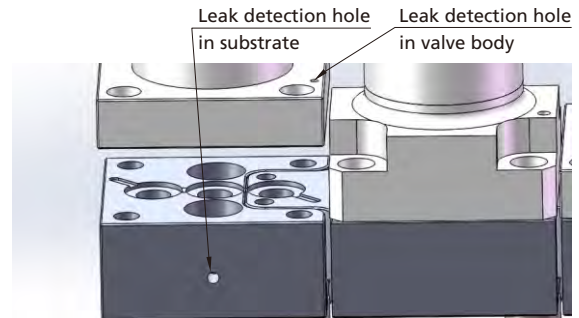
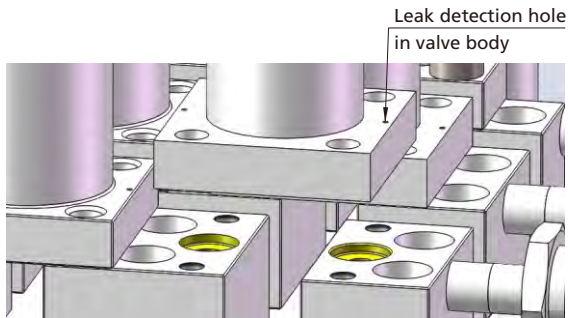
## Miniaturization

The size is about 1/3 the traditional panel, and the corresponding flow path size is also reduced for better contamination control.



## Leak Detection Hole

Every sealing face has a leak detection hole.



## Silver-Plated Bolts

IGS uses silver-plated bolts to prevent galling. Silver-plated bolts can be ordered individually. Part number: BL-M4x10 (10 mm long) BL-M4x30 (30 mm long) For other sizes, please contact FITOK Group.



## Bolts with Falling Prevention Design

Silver-plated bolt is gripped by the valve and will not fall even when the valve is upside down during installation and maintenance.



Fittings

Valves

Regulators

Filters

Tubing

Integrated Systems

Other Products

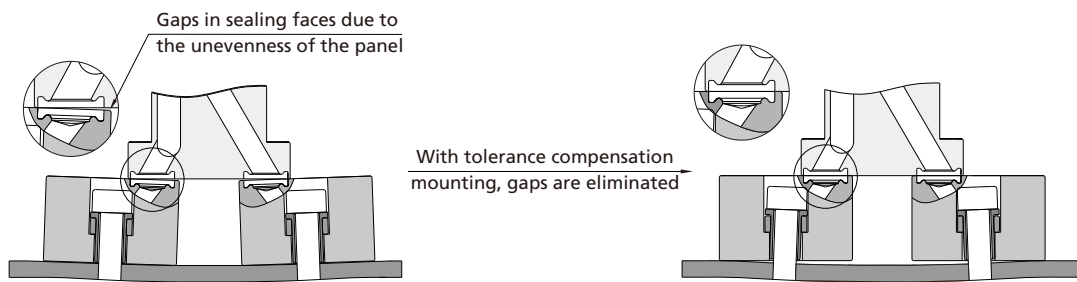
Technical Information

### Tolerance Compensation Structure (W-Seal Only)

W-seal substrates are designed with a tolerance compensation construction, allowing for less assembly tolerance and ensuring the system sealing performance to the greatest extent.

The substrate is locked to the panel through the bolt pressing the sleeve, while the substrate is variable.

1. Horizontally variable: Used to compensate for the machining tolerances in panel threaded holes to ensure that substrates are mounted in a straight line.
2. Vertically variable: Used to compensate for dimensional tolerances of panels and substrates to ensure sealing performance.



### W/C-Seal

W-seal and C-seal are functionally the same but differ in size due to different SEMI standards applied. Users can choose W-seal or C-seal based on customs and accessories selection. The leak rate (helium) of the sealing face  $\leq 1 \times 10^{-9}$  std-cm<sup>3</sup>/s.

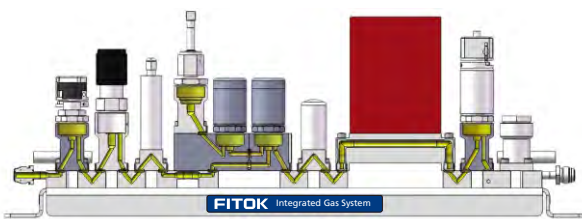
#### W-Seal Body/Substrate/Gasket



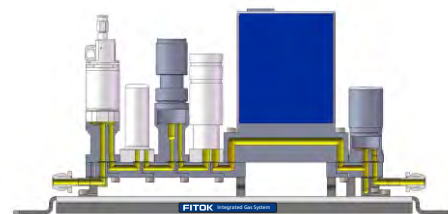
#### C-Seal Body/Substrate/Gasket



#### Typical W-Seal System



#### Typical C-Seal System



## Special Tool Kit



FITOK provides special tool kits for users to perform assembly and maintenance in an efficient way. Part number: SC-IGS-11.

Special tool kit content:

Name	Function	Qty.
Substrate locator fixture	W-seal substrate locator	3 pcs.
MFC (92 mm) locator fixture	W-seal substrate locator	1 pc.
Torque screwdriver	1~6 N·m, used to secure substrates and valves	1 pc.
Torque screwdriver bits	For M4 screws	2 pcs.
Extra-long T type hex key	For M4 screws	1 pc.
Gasket tweezers	For 1.125" W-seal gaskets	1 pc.

## Heat Trace Cable

Heat trace cables are optional for gas path in need of heat trace.



## Process Specification

Item	Process Specification	Ultra High Purity Process (FC-03)
Material		316L SS, 316L SS VAR
Wetted Surface Roughness		Ra 5 μin. (0.13 μm)
Polishing Process		Electropolished
Cleaning		Ultra high purity cleaning in continuously monitored ultrasonic cleaning system with deionized water
Assembly Environment		ISO 4 / Federal 10 Clean Room
Packaging		Double bagged in cleanroom

Fittings

Valves

Regulators

Filters

Tubing

Integrated Systems

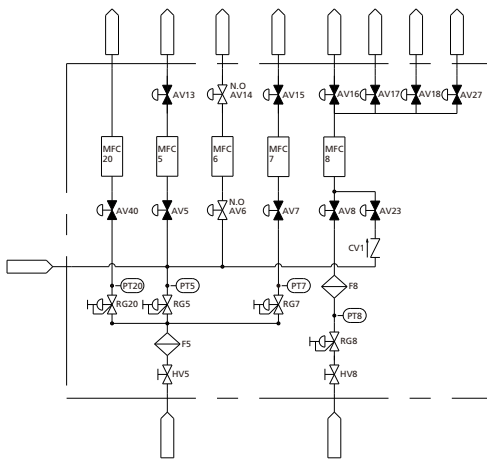
Other Products

Technical Information

# Modular System Design Processes

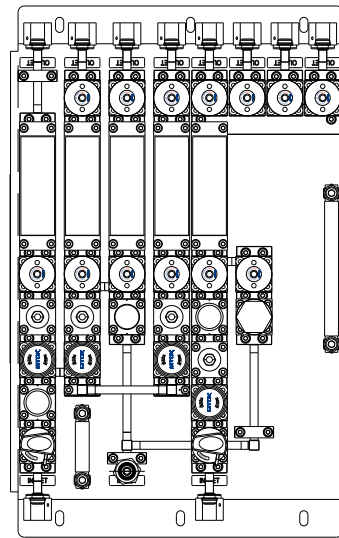
## Step 1: System design

Determine basic component selections based on the schematic diagram provided by the customer.



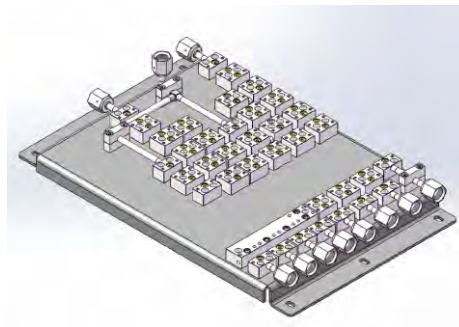
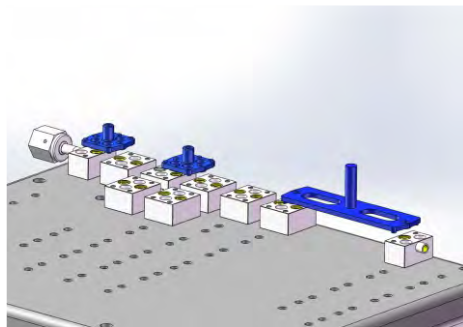
## Step 2: Component Manufacturing

Manufacture components to the drawings after the customer finalizes the configuration.



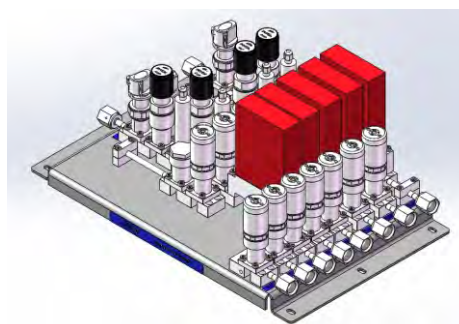
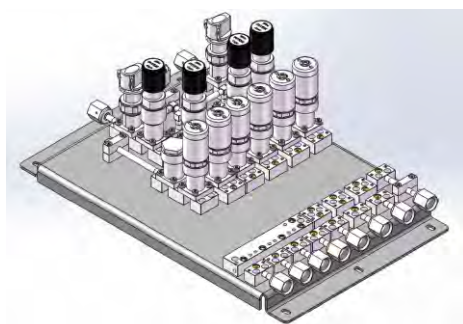
## Step 3: Component Assembly

Assemble components properly using the special tool kit. Substrate locator is needed for the assembly of W-seal system but is not required for that of C-seal system.



## Step 4: Testing

Standard test items include helium testing and pressure testing, and particle testing is optional.



Fittings

Valves

Regulators

Filters

Tubing

Integrated Systems

Other Products

Technical Information

# Parts

## Substrates ISW Series

### Features

- ◎ Tolerance compensation structure to facilitate less assembly tolerance and ensure system sealing performance to the greatest extent
- ◎ Final assembly and packaging performed in ISO 4 cleanroom



### Technical Data



- ◎ 1.125" W-Seal
- ◎ Leak Rate (Helium):  $\leq 1 \times 10^{-9}$  std·cm<sup>3</sup>/s
- ◎ FC-03 Ultra-high Purity Process Specification
- ◎ Wetted surface roughness less than Ra 5  $\mu$ m. (0.13  $\mu$ m)  
For Pores with an L/D Greater than 10, the Roughness Less than Ra 32  $\mu$ m. (0.8  $\mu$ m)

### Process Specification

Item	Process Specification	Ultra High Purity Process (FC-03)
Material		316L SS, 316L SS VAR
Wetted Surface Roughness		Ra 5 $\mu$ m. (0.13 $\mu$ m)
Polishing Process		Electropolished

- Fittings
- Valves
- Regulators
- Filters
- Tubing
- Integrated Systems
- Other Products
- Technical Information

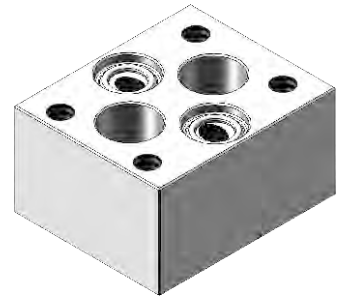
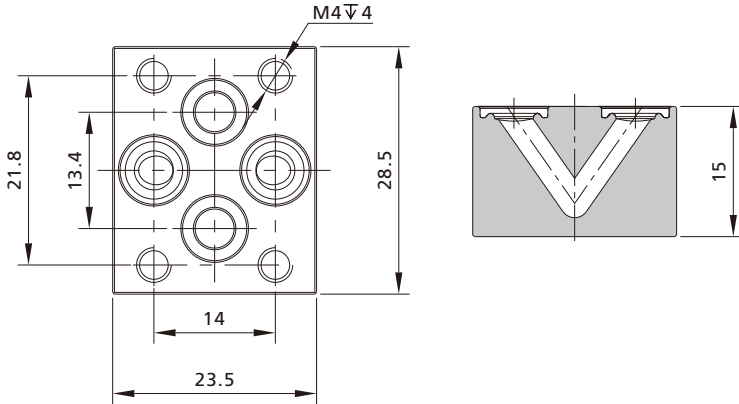
**Contents**

Fittings		<b>Standard Substrates -IVB</b>	I-24
Valves		<b>1-Path Bypass Substrates -ISB</b>	I-24
Regulators		<b>Plugs -IEC</b>	I-27
Filters		<b>Transition Substrates -ITC</b>	I-28
Tubing		<b>2-Path Bypass Substrates -IDB</b>	I-29
Integrated Systems		<b>End Substrates -IEB</b>	I-30
Other Products		<b>Ordering Number Description</b>	I-31
Technical Information			

## Dimensions and Ordering Information

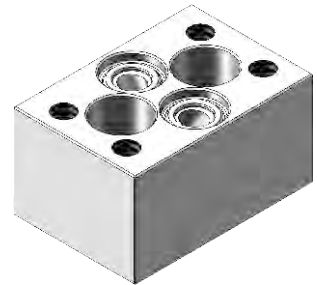
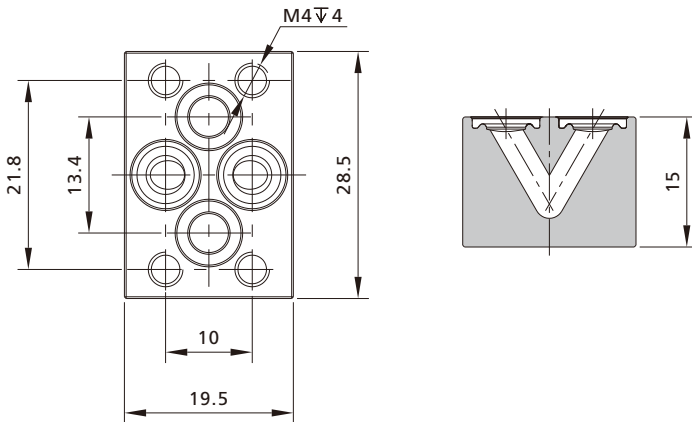
### Standard Substrates

Basic Ordering Number: -IVB-WS11-V014-F3  
 Unit: mm



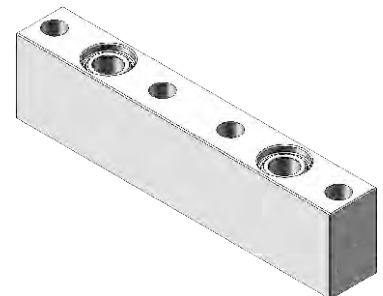
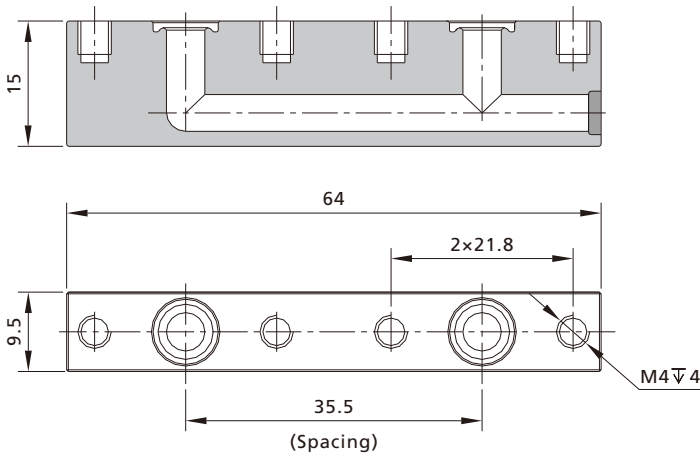
### Standard Substrates

Basic Ordering Number: -IVB-WS11-V010-F3  
 Unit: mm



### 1-Path Bypass Substrates

Spacing 35.5 mm Basic Ordering Number: -ISB-WS11-M200-F3  
 Spacing 30 mm Basic Ordering Number: -ISB-WS11-M201-F3  
 Unit: mm



Fittings

Valves

Regulators

Filters

Tubing

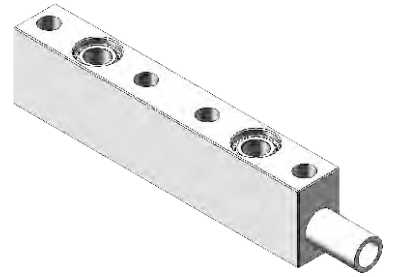
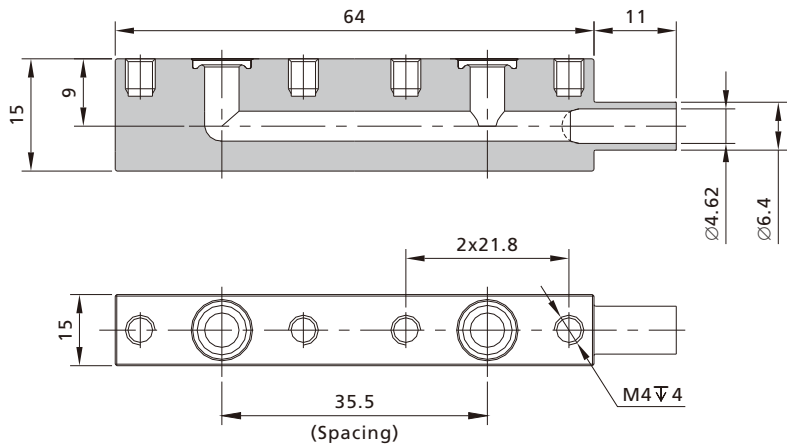
Integrated Systems

Other Products

Technical Information

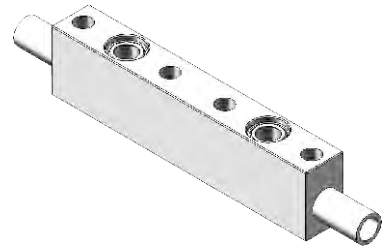
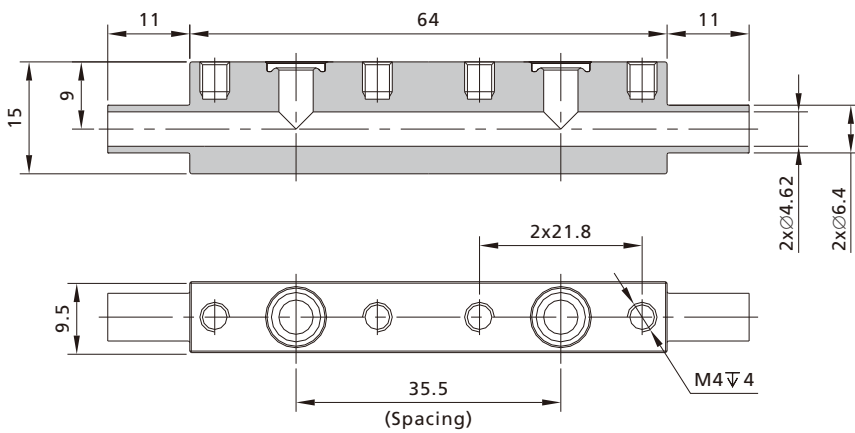
**1-Path Bypass Substrates**

Spacing 35.5 mm Basic Ordering Number: -ISB-WS11-M210-F3  
 Spacing 30 mm Basic Ordering Number: -ISB-WS11-M211-F3  
 Unit: mm



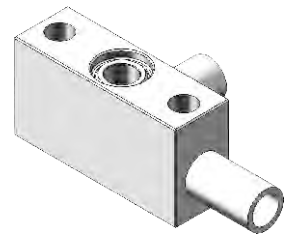
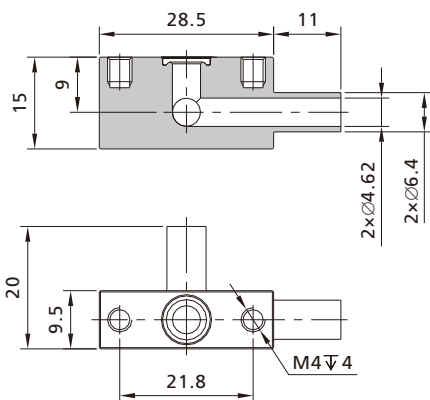
**1-Path Bypass Substrates**

Spacing 35.5 mm Basic Ordering Number: -ISB-WS11-M220-F3  
 Spacing 30 mm Basic Ordering Number: -ISB-WS11-M221-F3  
 Unit: mm



**1-Path Bypass Substrates**

Basic Ordering Number: -ISB-WS11-S122-F3  
 Unit: mm

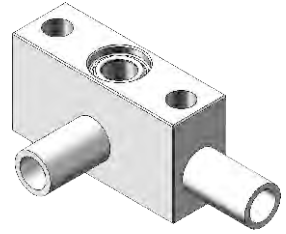
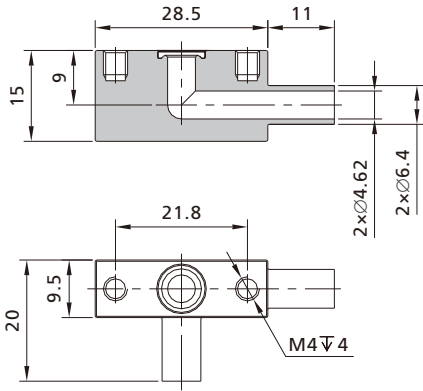


Fittings  
 Valves  
 Regulators  
 Filters  
 Tubing  
 Integrated Systems  
 Other Products  
 Technical Information

### 1-Path Bypass Substrates

Basic Ordering Number: -ISB-WS11-S121-F3

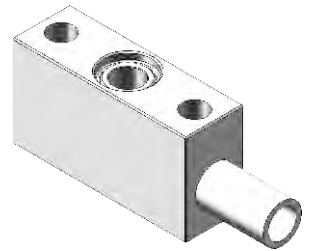
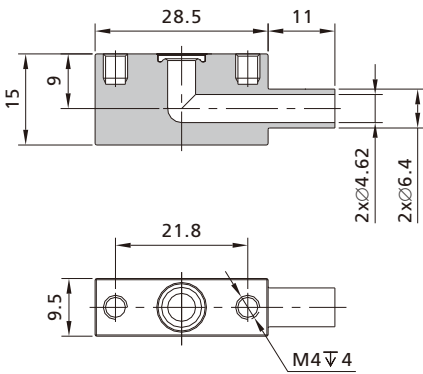
Unit: mm



### 1-Path Bypass Substrates

Basic Ordering Number: -ISB-WS11-S110-F3

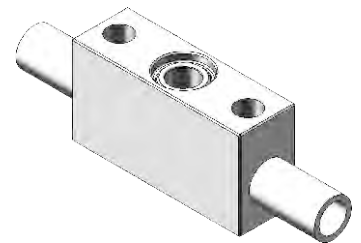
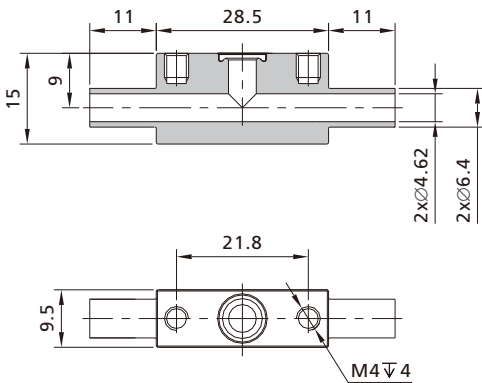
Unit: mm



### 1-Path Bypass Substrates

Basic Ordering Number: -ISB-WS11-S120-F3

Unit: mm



Fittings

Valves

Regulators

Filters

Tubing

Integrated Systems

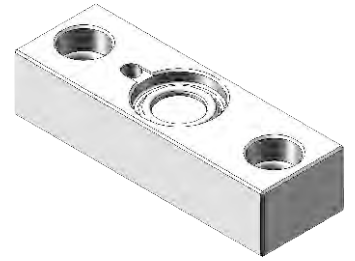
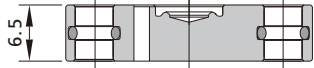
Other Products

Technical Information

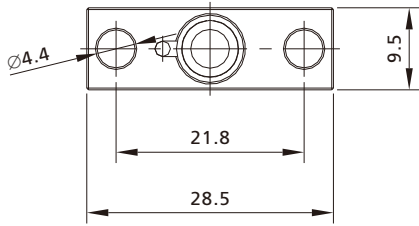
Fittings

**Plugs**

Basic Ordering Number: -IEC-WS11-S100-F3  
Unit: mm



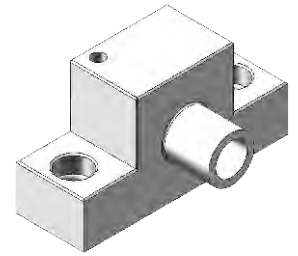
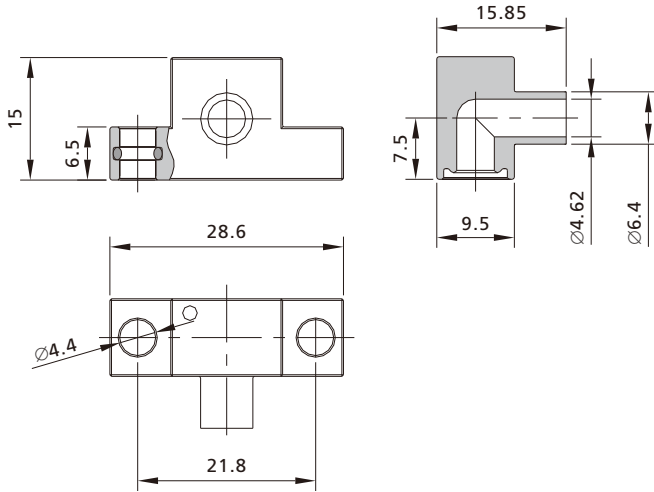
Valves



Regulators

**Plugs**

Basic Ordering Number: -IEC-WS11-S120-F3  
Unit: mm

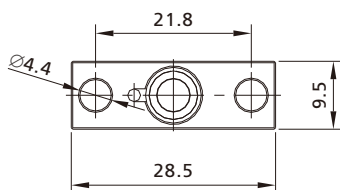
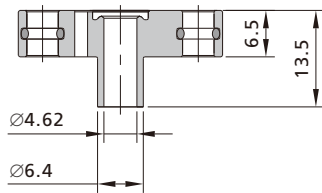


Filters

Tubing

**Plugs**

Basic Ordering Number: -IEC-WS11-S110-F3  
Unit: mm



Integrated Systems

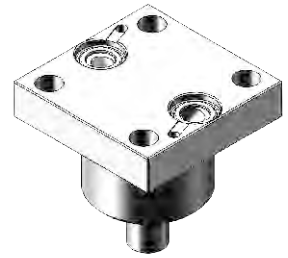
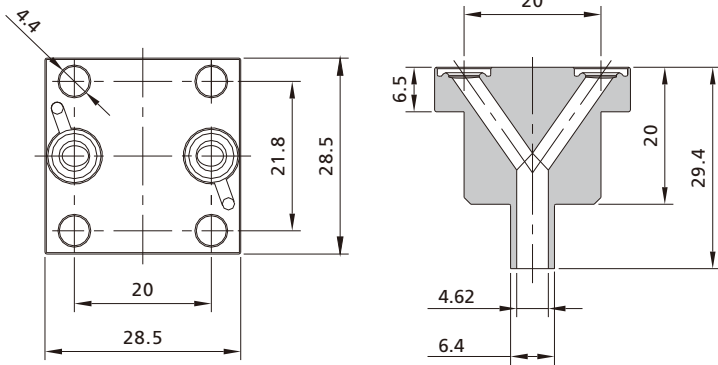
Other Products

Technical Information

**Transition Substrates**

Basic Ordering Number: -ITC-WS11-S201-F3

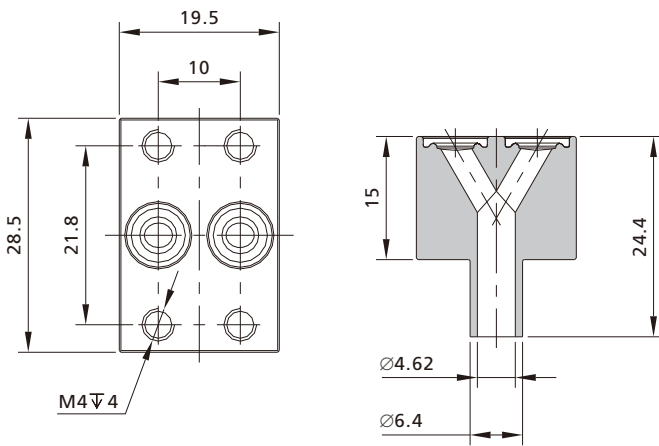
Unit: mm



**Transition Substrates**

Basic Ordering Number: -ITC-WS11-N201-F3

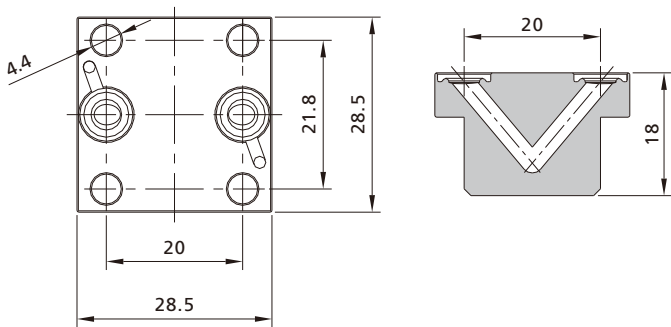
Unit: mm



**Transition Substrates**

Basic Ordering Number: -ITC-WS11-S200-F3

Unit: mm



Fittings

Valves

Regulators

Filters

Tubing

Integrated Systems

Other Products

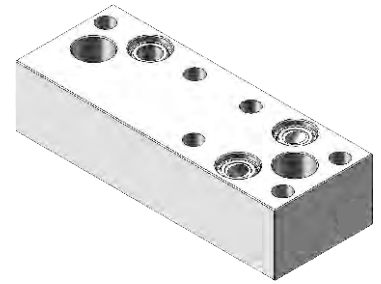
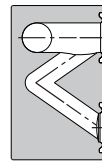
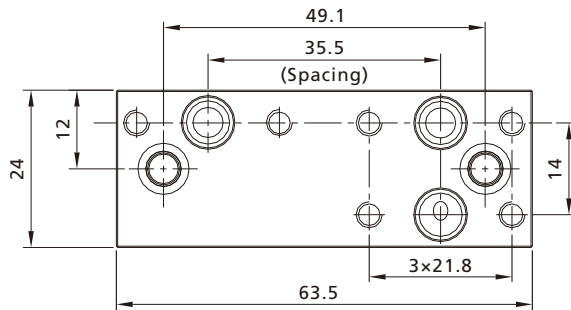
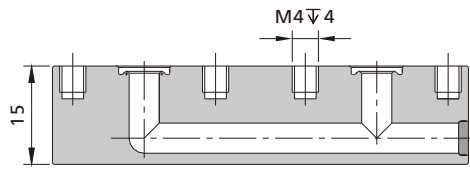
Technical Information

**2-Path Bypass Substrates**

Spacing 35.5 mm Basic Ordering Number: -IDB-WS11-M210-F3

Spacing 30 mm Basic Ordering Number: -IDB-WS11-M211-F3

Unit: mm

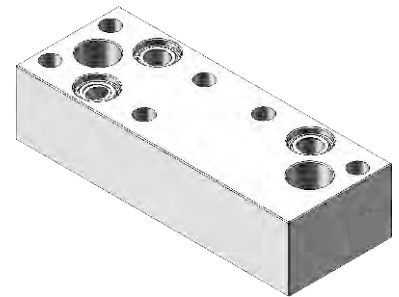
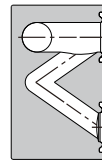
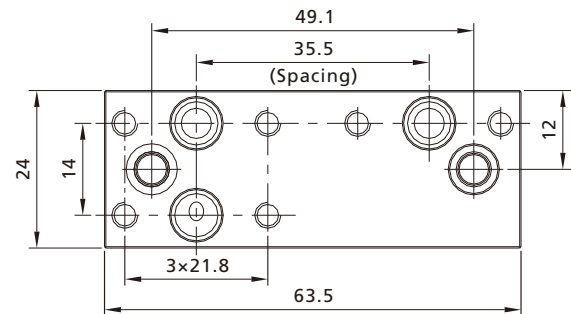
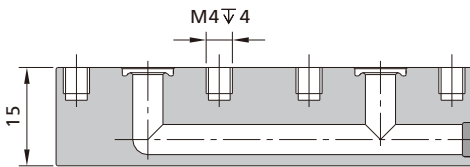


**2-Path Bypass Substrates**

Spacing 35.5 mm Basic Ordering Number: -IDB-WS11-M220-F3

Spacing 30 mm Basic Ordering Number: -IDB-WS11-M221-F3

Unit: mm

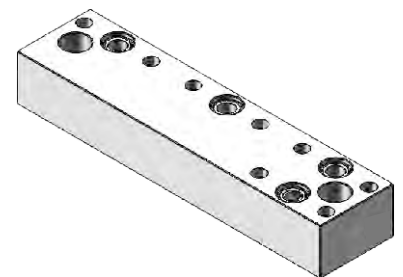
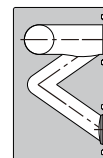
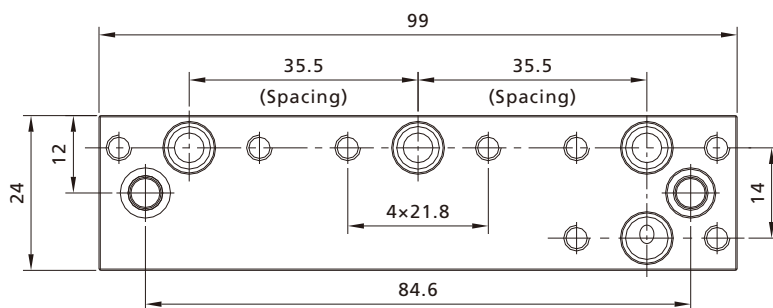
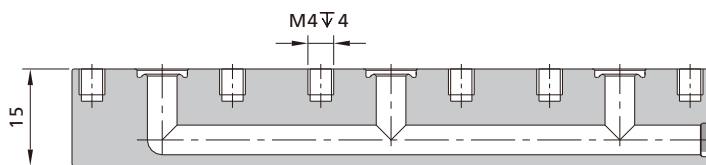


**2-Path Bypass Substrates**

Spacing 35.5 mm Basic Ordering Number: -IDB-WS11-M310-F3

Spacing 30 mm Basic Ordering Number: -IDB-WS11-M311-F3

Unit: mm



Fittings

Valves

Regulators

Filters

Tubing

Integrated Systems

Other Products

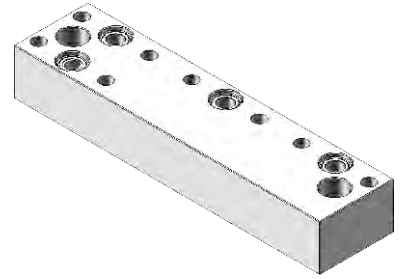
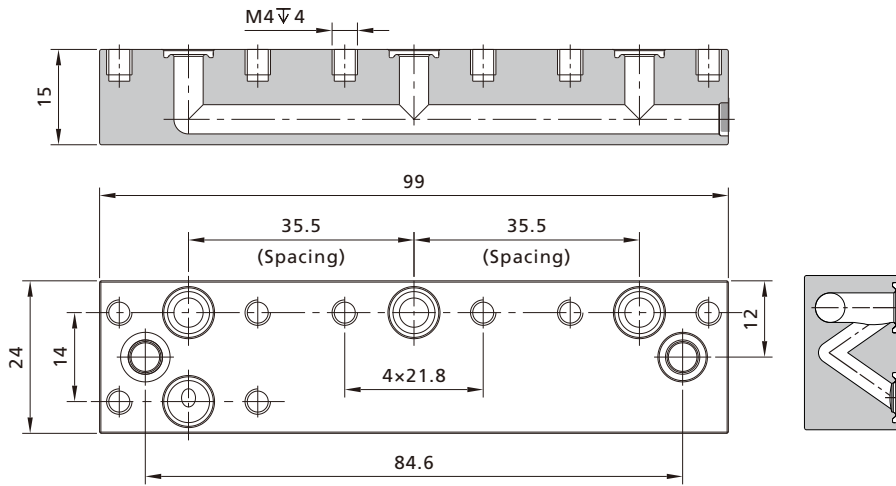
Technical Information

### 2-Path Bypass Substrates

Spacing 35.5 mm Basic Ordering Number: -IDB-WS11-M320-F3

Spacing 30 mm Basic Ordering Number: -IDB-WS11-M321-F3

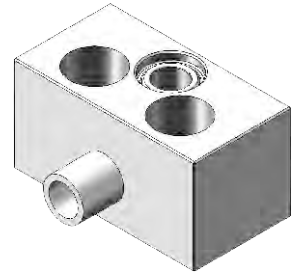
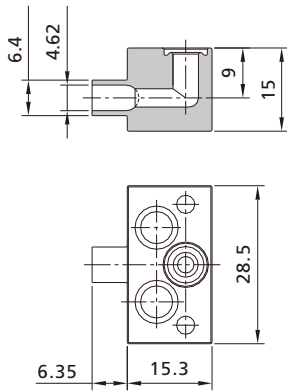
Unit: mm



### End Substrates

Basic Ordering Number: -IEB-WS11-E102-F3

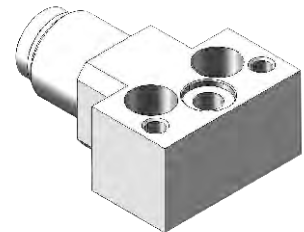
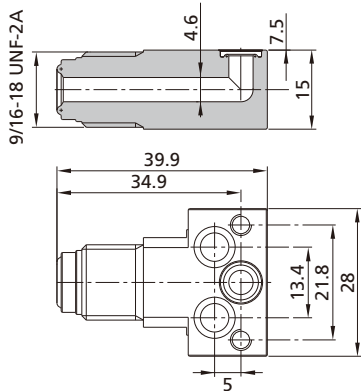
Unit: mm



### End Substrates

Basic Ordering Number: -IEB-WS11-FR4-34.9-F3

Unit: mm



Fittings

Valves

Regulators

Filters

Tubing

Integrated Systems

Other Products

Technical Information

## Ordering Number Description

6L - IVB - WS11 - V014 - F3

Body Material		Substrate Type		Port Type		Substrate Designator		Process Specification	
6L	316L SS	IVB	Standard Substrates	WS11	1.125" W-Seal	V014	N201	F3	FC-03
6LV	316L SS VAR	ISB	1-Path Bypass Substrates			V010	E102		
		IEC	Plugs			M200	S100		
		ITC	Transition Substrates			M201	S200		
		IDB	2-Path Bypass Substrates			M210	S201		
		IEB	End Substrates			M211	S122		
						M220	S121		
						M221	S110		
						M310	S120		
						M311			
						M320			
						M321			

Notes:

"Ordering Number Description" is a reference to understand the combination rules of FITOK product part number. Not all combinations are available. Please contact FITOK Group or our authorized distributors if you have any requests.

Fittings
Valves
Regulators
Filters
Tubing
Integrated Systems
Other Products
Technical Information

# Parts

## Substrates ISC Series

### Features

- Multiple types of flow path applicable to various integrated systems
- Final assembly and packaging performed in ISO 4 cleanroom

### Technical Data

- 1.125" C-Seal
- Leak Rate (Helium):  $\leq 1 \times 10^{-9}$  std-cm<sup>3</sup>/s
- FC-03 Ultra-high Purity Process Specification,
- Wetted surface roughness less than Ra 5  $\mu$ m. (0.13  $\mu$ m)



### Process Specification

Item	Process Specification	Ultra High Purity (FC-03)
Material		316L SS, 316L SS VAR
Wetted Surface Roughness		Ra 5 $\mu$ m. (0.13 $\mu$ m)
Polishing Process		Electropolished

Fittings

Valves

Regulators

Filters

Tubing

Integrated Systems

Other Products

Technical Information

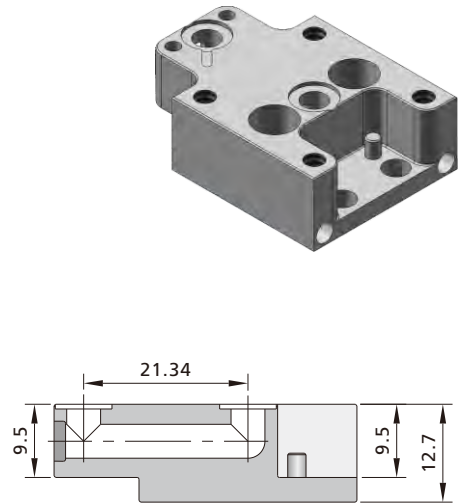
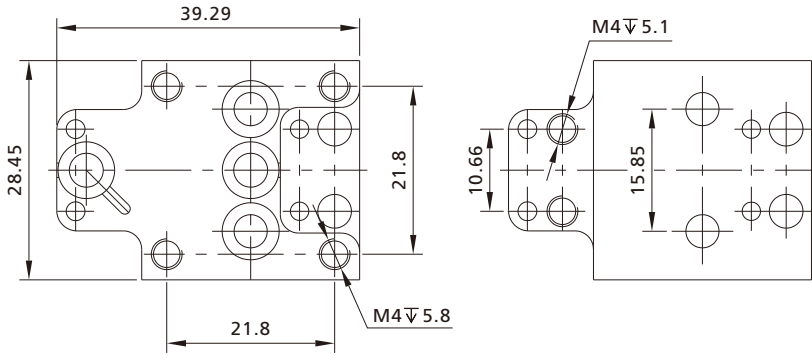
**Contents**

Fittings		<p><b>Standard Substrates -IVB</b></p>	<p>I-34</p>
Valves		<p><b>1-Path Bypass Substrates -ISB</b></p>	<p>I-37</p>
Regulators		<p><b>Plugs -IEC</b></p>	<p>I-39</p>
Filters		<p><b>Transition Substrates -ITC</b></p>	<p>I-41</p>
Tubing		<p><b>Mount Block -IDK</b></p>	<p>I-42</p>
Integrated Systems		<p><b>Brackets -IZJ</b></p>	<p>I-44</p>
Other Products	<p><b>Ordering Number Description</b></p>		<p>I-42</p>
Technical Information			

## Dimensions and Ordering Information

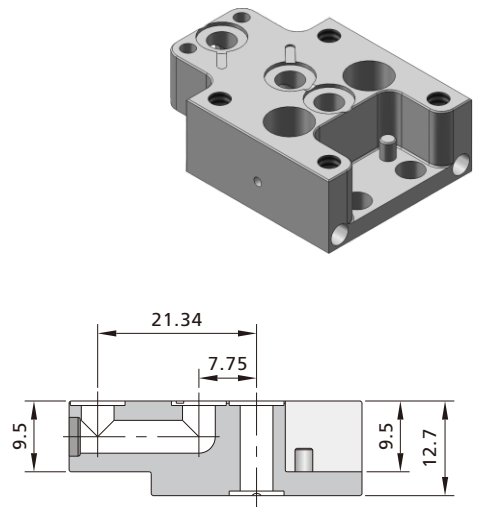
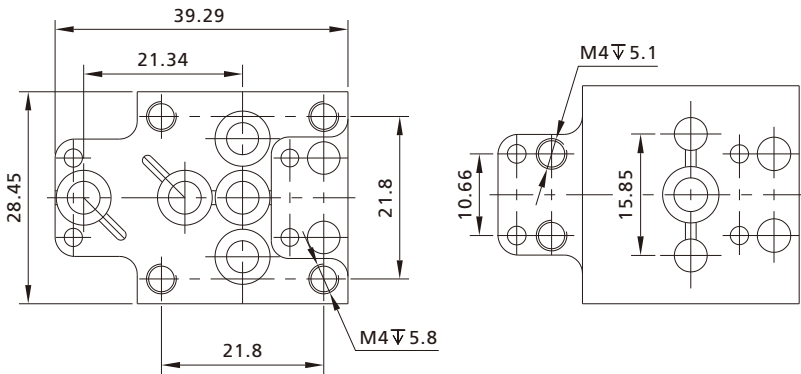
### Standard Substrates

Basic Ordering Number: -IVB-CS11-D200-F3  
 Unit: mm



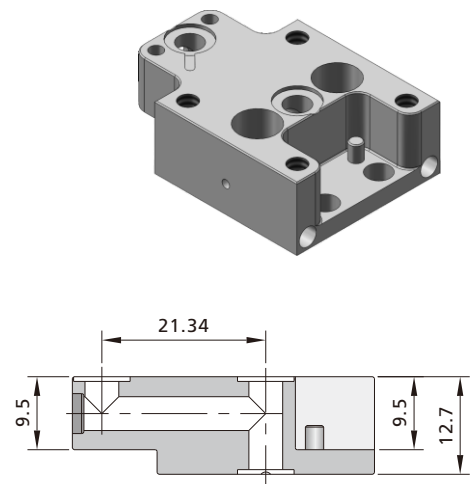
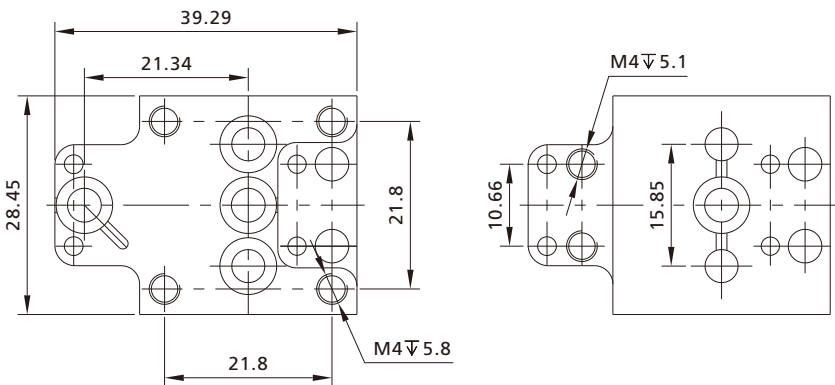
### Standard Substrates

Basic Ordering Number: -IVB-CS11-D310-F3  
 Unit: mm



### Standard Substrates

Basic Ordering Number: -IVB-CS11-D210-F3  
 Unit: mm



Fittings

Valves

Regulators

Filters

Tubing

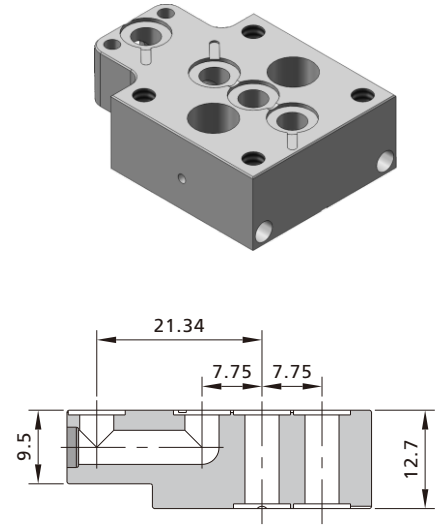
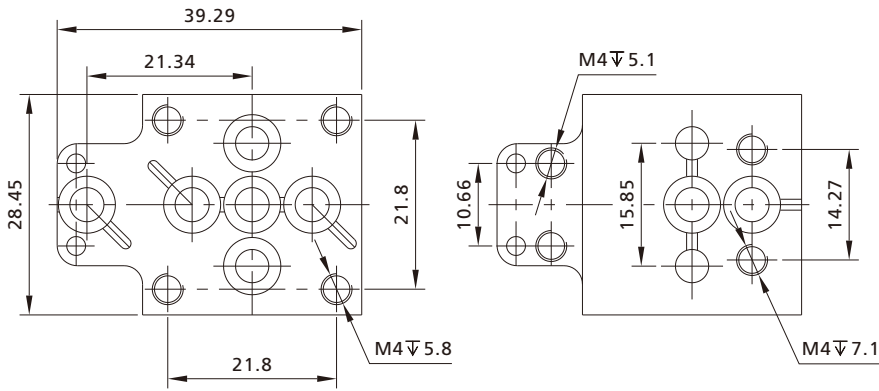
Integrated Systems

Other Products

Technical Information

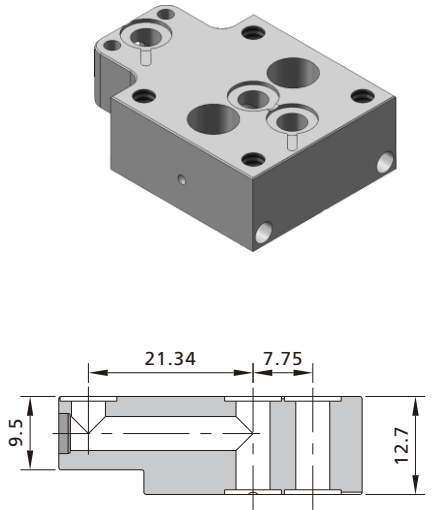
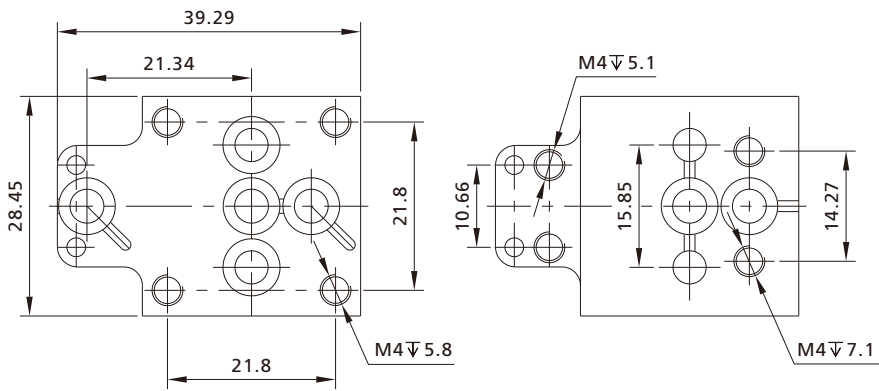
**Standard Substrates**

Basic Ordering Number: -IVB-CS11-M420-F3  
Unit: mm



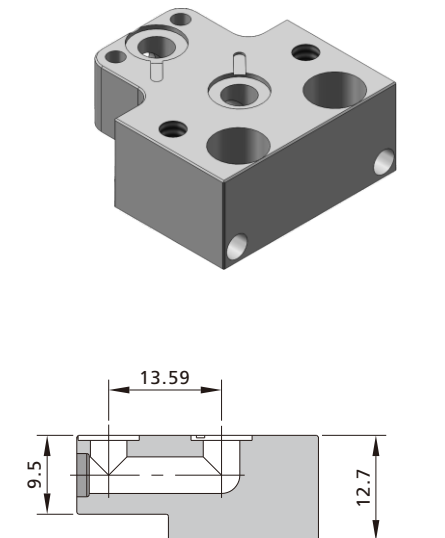
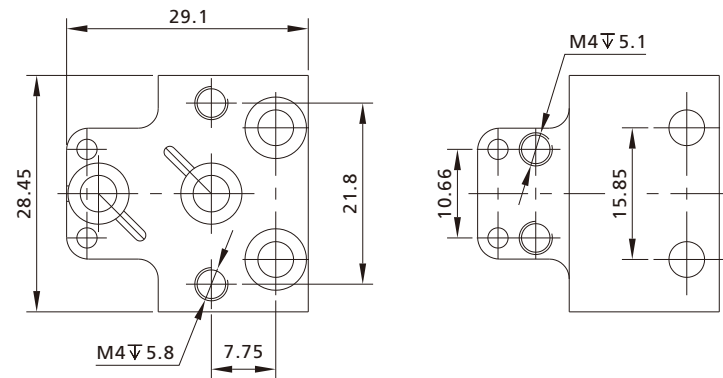
**Standard Substrates**

Basic Ordering Number: -IVB-CS11-M320-F3  
Unit: mm



**Standard Substrates**

Basic Ordering Number: -IVB-CS11-M202-F3  
Unit: mm

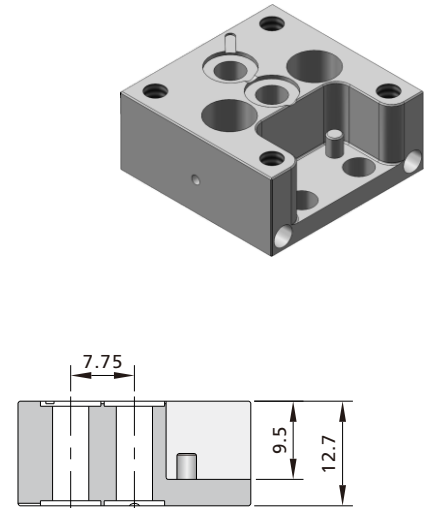
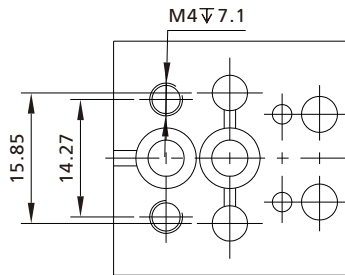
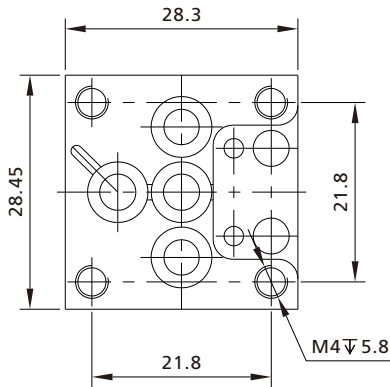


Fittings  
Valves  
Regulators  
Filters  
Tubing  
Integrated Systems  
Other Products  
Technical Information

**Standard Substrates**

Basic Ordering Number: -IVB-CS11-F220-F3

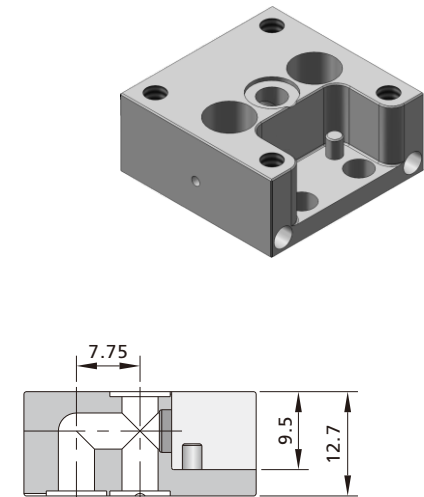
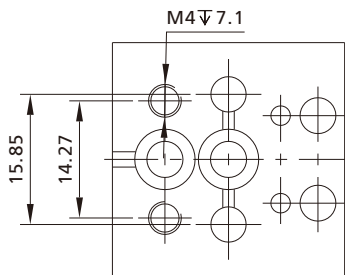
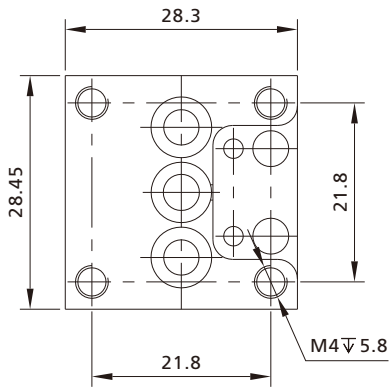
Unit: mm



**Standard Substrates**

Basic Ordering Number: -IVB-CS11-F120-F3

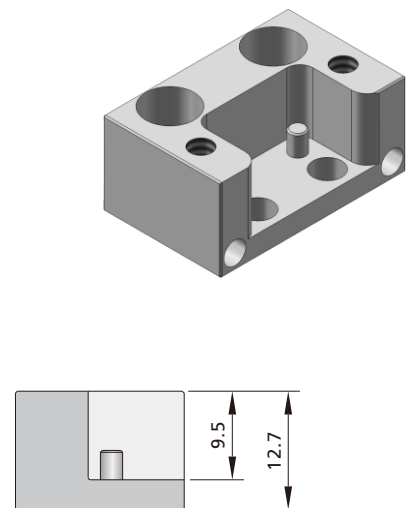
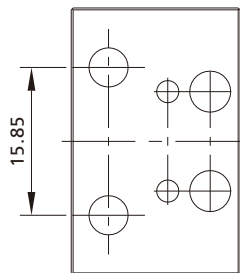
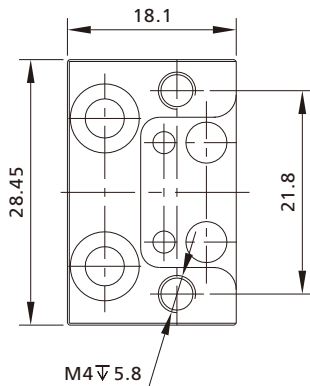
Unit: mm



**Standard Substrates**

Basic Ordering Number: -IVB-CS11-F002-F3

Unit: mm



Fittings

Valves

Regulators

Filters

Tubing

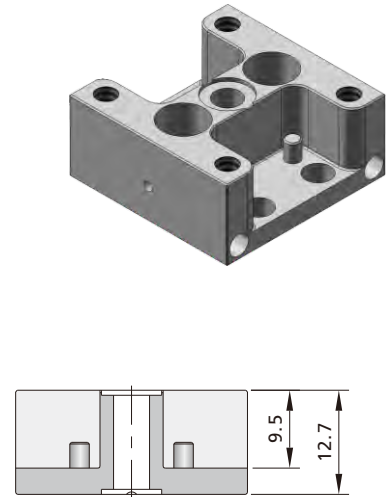
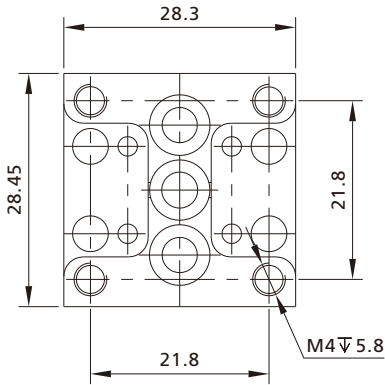
Integrated Systems

Other Products

Technical Information

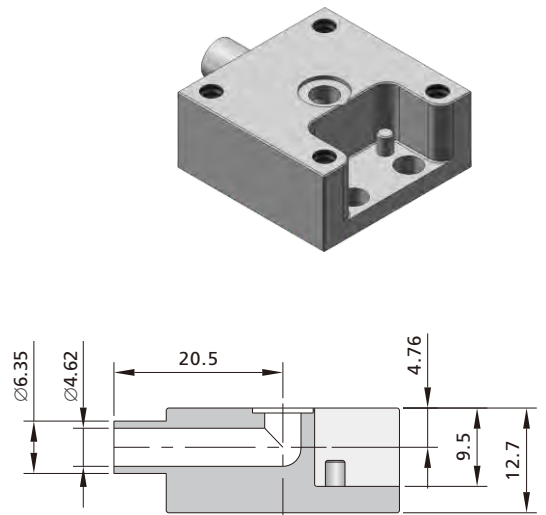
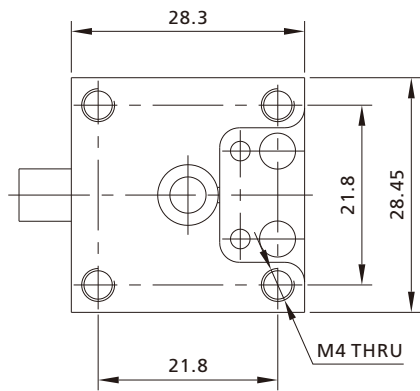
**Standard Substrates**

Basic Ordering Number: -IVB-CS11-B110-F3  
Unit: mm



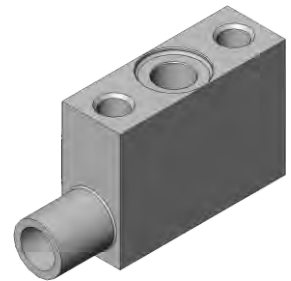
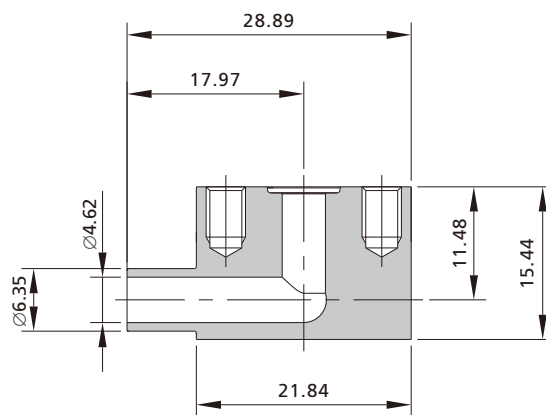
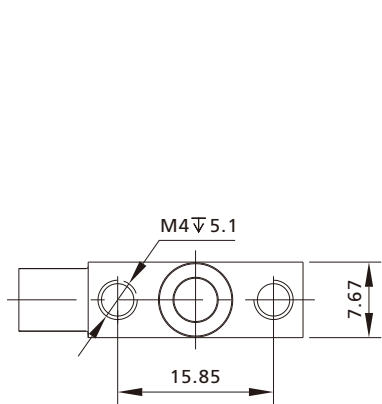
**Standard Substrates**

Basic Ordering Number: -IVB-CS11-F100-F3  
Unit: mm



**1-Path Bypass Substrates**

Basic Ordering Number: -ISB-CS11-S110-F3  
Unit: mm

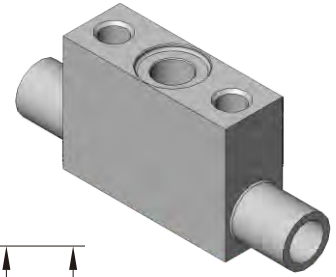
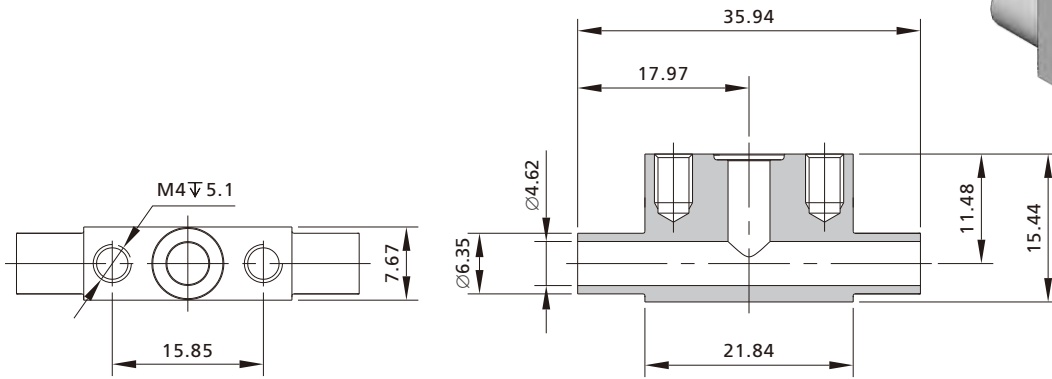


Fittings  
 Valves  
 Regulators  
 Filters  
 Tubing  
 Integrated Systems  
 Other Products  
 Technical Information

### 1-Path Bypass Substrates

Basic Ordering Number: -ISB-CS11-S120-F3

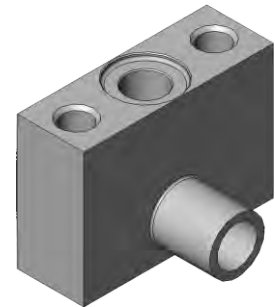
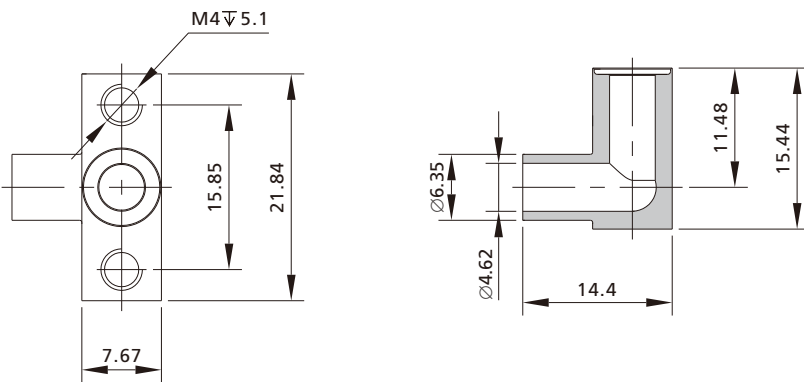
Unit: mm



### 1-Path Bypass Substrates

Basic Ordering Number: -ISB-CS11-S111-F3

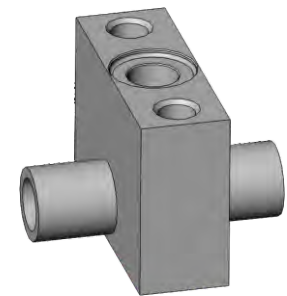
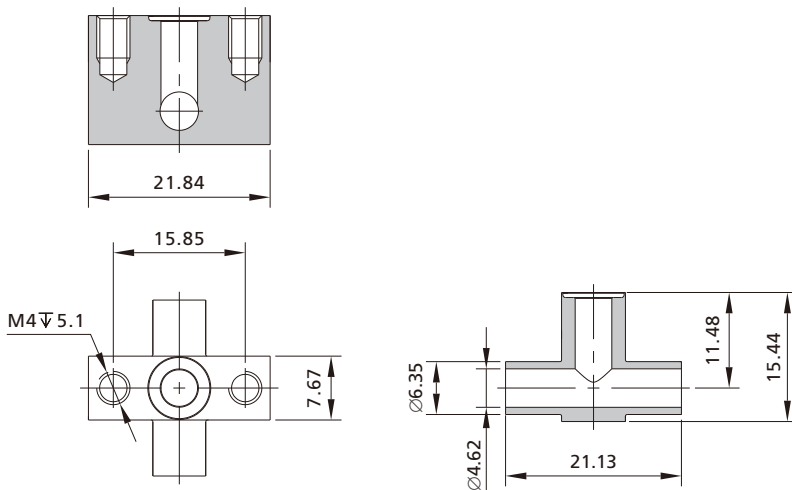
Unit: mm



### 1-Path Bypass Substrates

Basic Ordering Number: -ISB-CS11-S126-F3

Unit: mm



Fittings

Valves

Regulators

Filters

Tubing

Integrated Systems

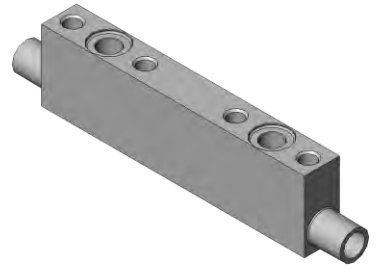
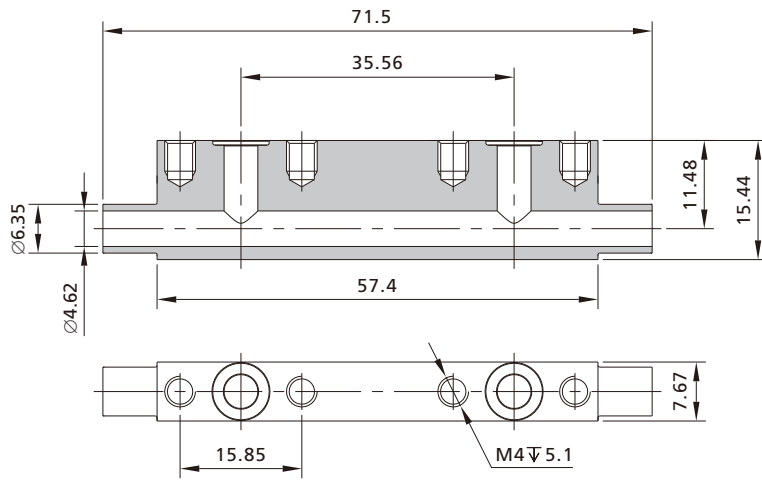
Other Products

Technical Information

**1-Path Bypass Substrates**

Basic Ordering Number: -ISB-CS11-M220-F3

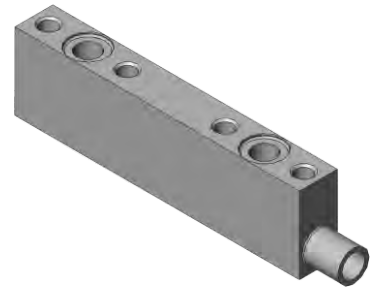
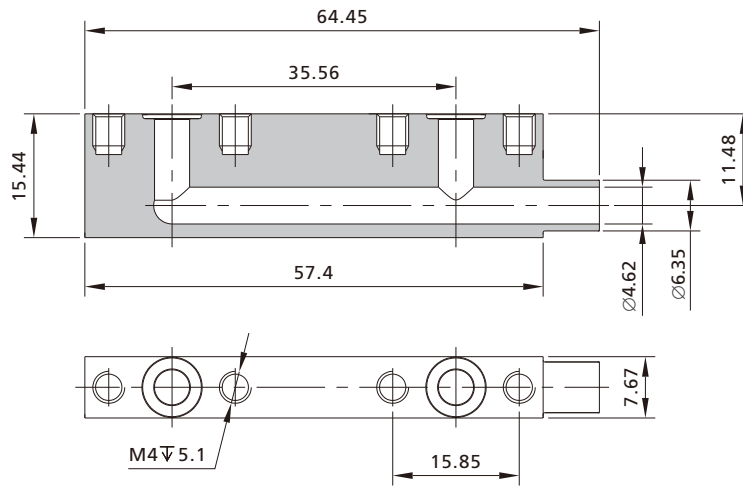
Unit: mm



**1-Path Bypass Substrates**

Basic Ordering Number: -ISB-CS11-M210-F3

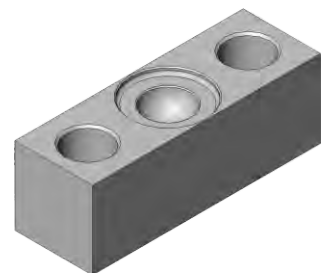
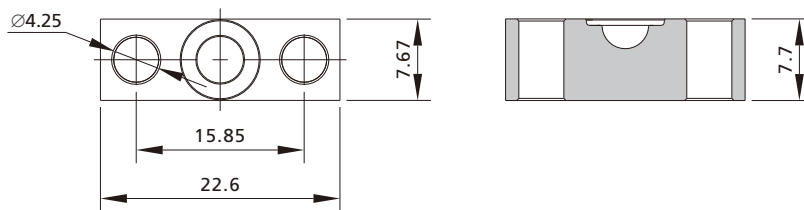
Unit: mm



**Plugs**

Basic Ordering Number: -IEC-CS11-S102-F3

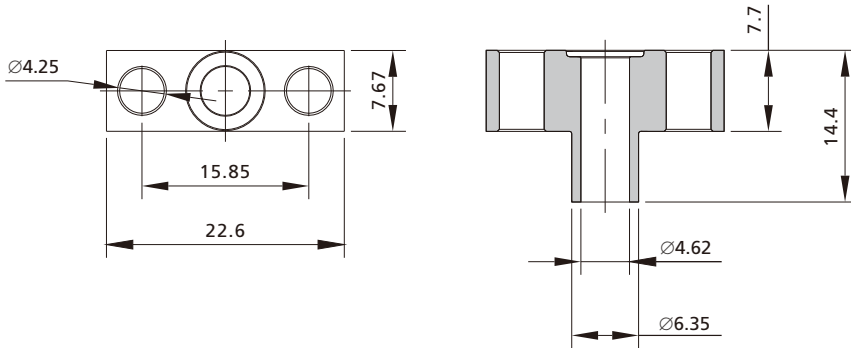
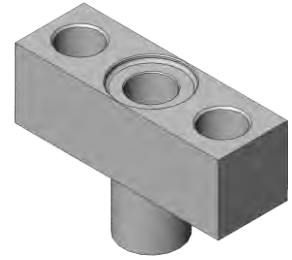
Unit: mm



**Plugs**

Basic Ordering Number: -IEC-CS11-S112-F3

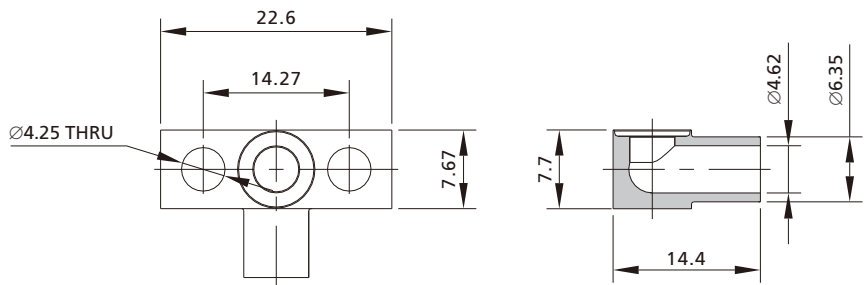
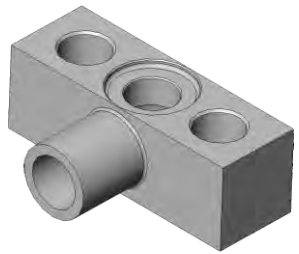
Unit: mm



**Plugs**

Basic Ordering Number: -IEC-CS11-S120-F3

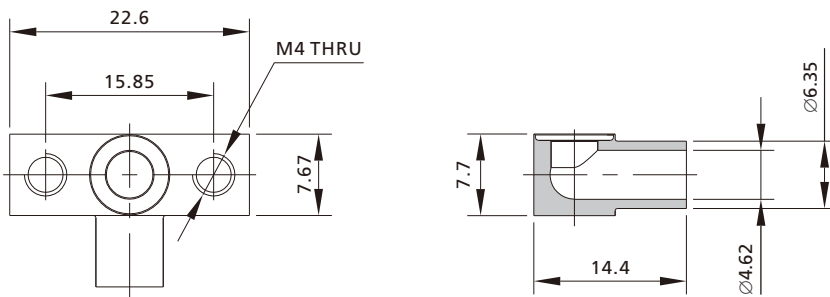
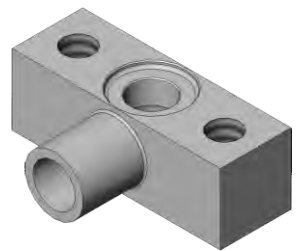
Unit: mm



**Plugs**

Basic Ordering Number: -IEC-CS11-S121-F3

Unit: mm



Fittings

Valves

Regulators

Filters

Tubing

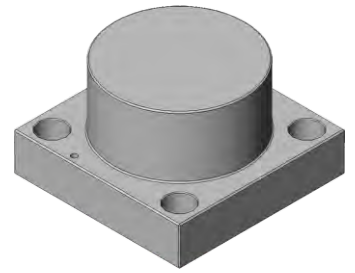
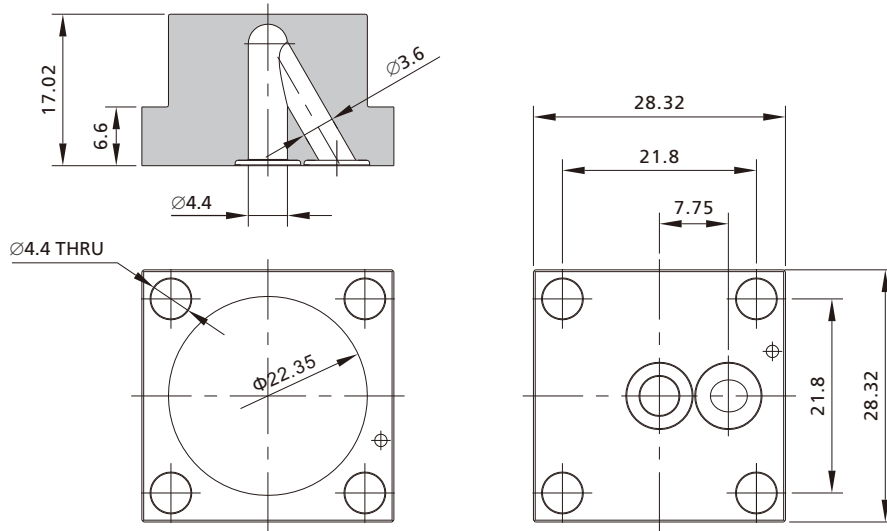
Integrated Systems

Other Products

Technical Information

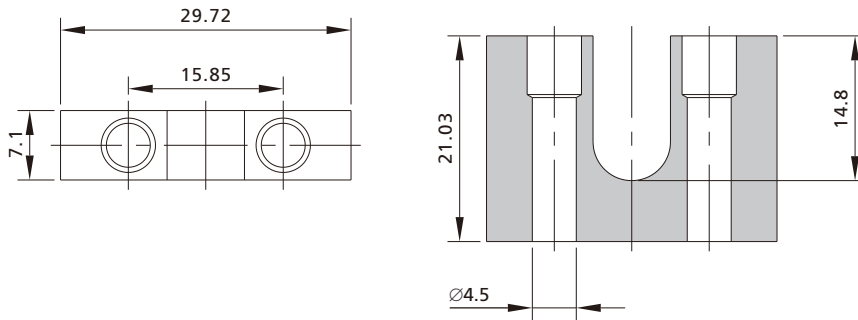
**Transition Substrates**

Basic Ordering Number: -ITC-CS11-S200-F3  
Unit: mm



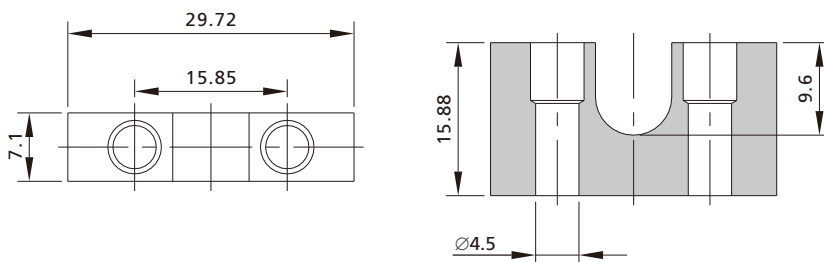
**Mount Blocks**

Ordering Number: AL-IDK-S418-F3  
Unit: mm



**Mount Blocks**

Ordering Number: AL-IDK-S416-F3  
Unit: mm

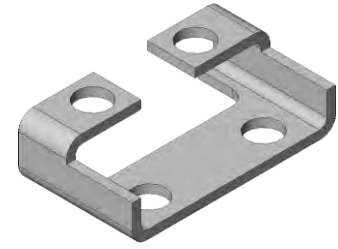
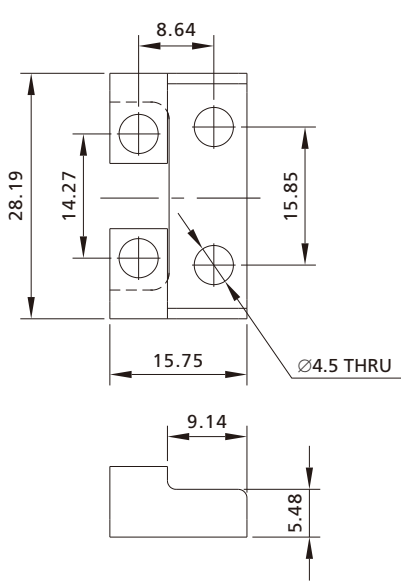


Fittings  
 Valves  
 Regulators  
 Filters  
 Tubing  
 Integrated Systems  
 Other Products  
 Technical Information

**Brackets**

Ordering Number: S4-IZJ-C413-F3

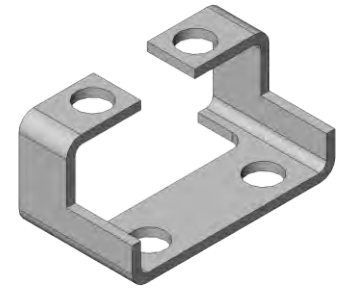
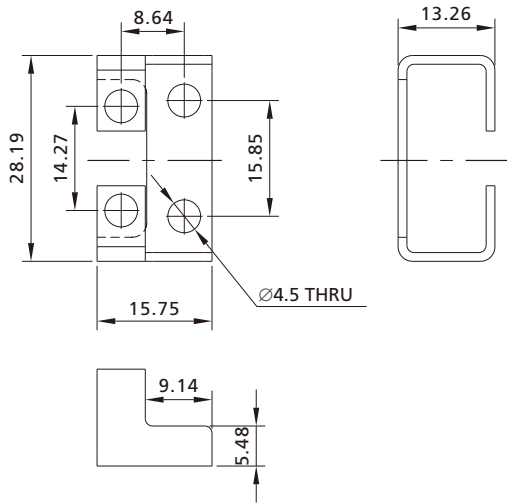
Unit: mm



**Brackets**

Ordering Number: S4-IZJ-C415-F3

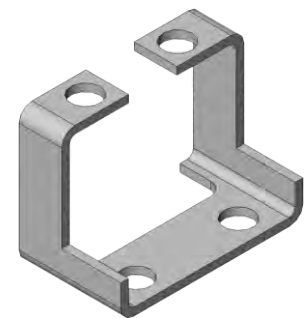
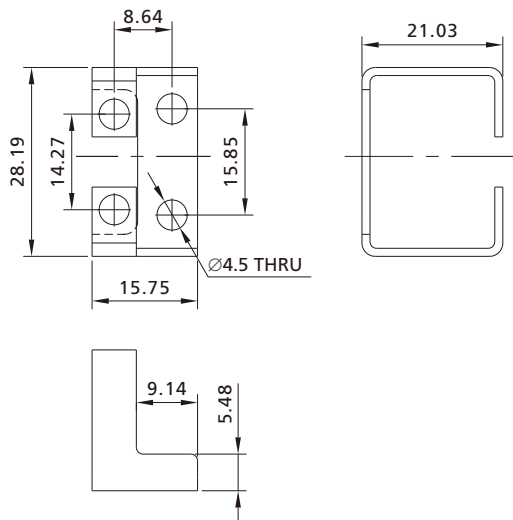
Unit: mm



**Brackets**

Ordering Number: S4-IZJ-C418-F3

Unit: mm



Fittings

Valves

Regulators

Filters

Tubing

Integrated Systems

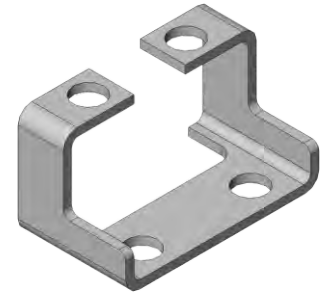
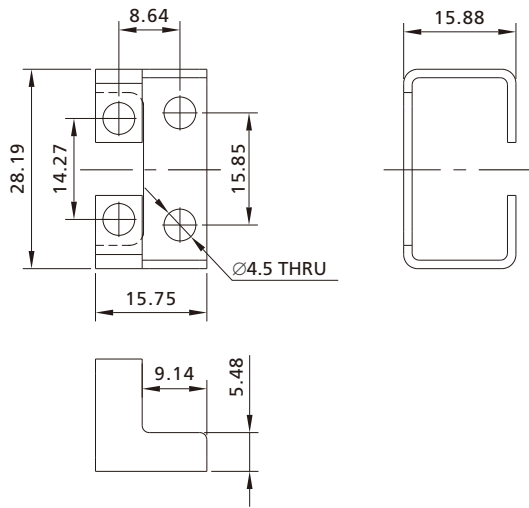
Other Products

Technical Information

**Brackets**

Ordering Number: S4-IZJ-C416-F3

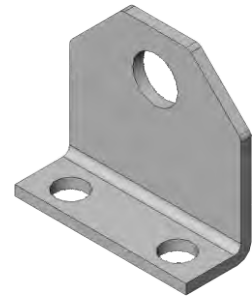
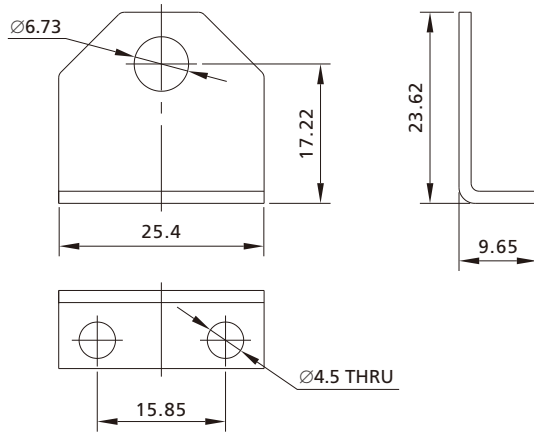
Unit: mm



**Brackets**

Ordering Number: S4-IZJ-L417-F3

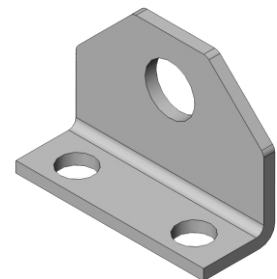
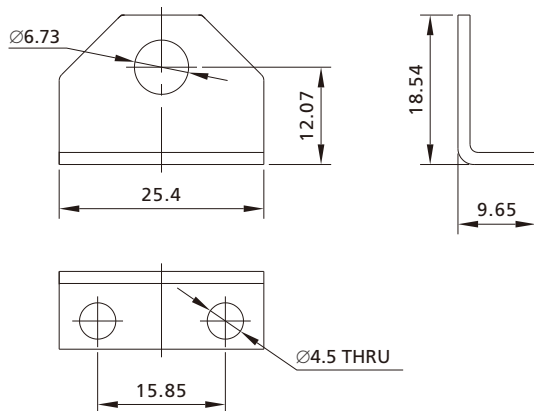
Unit: mm



**Brackets**

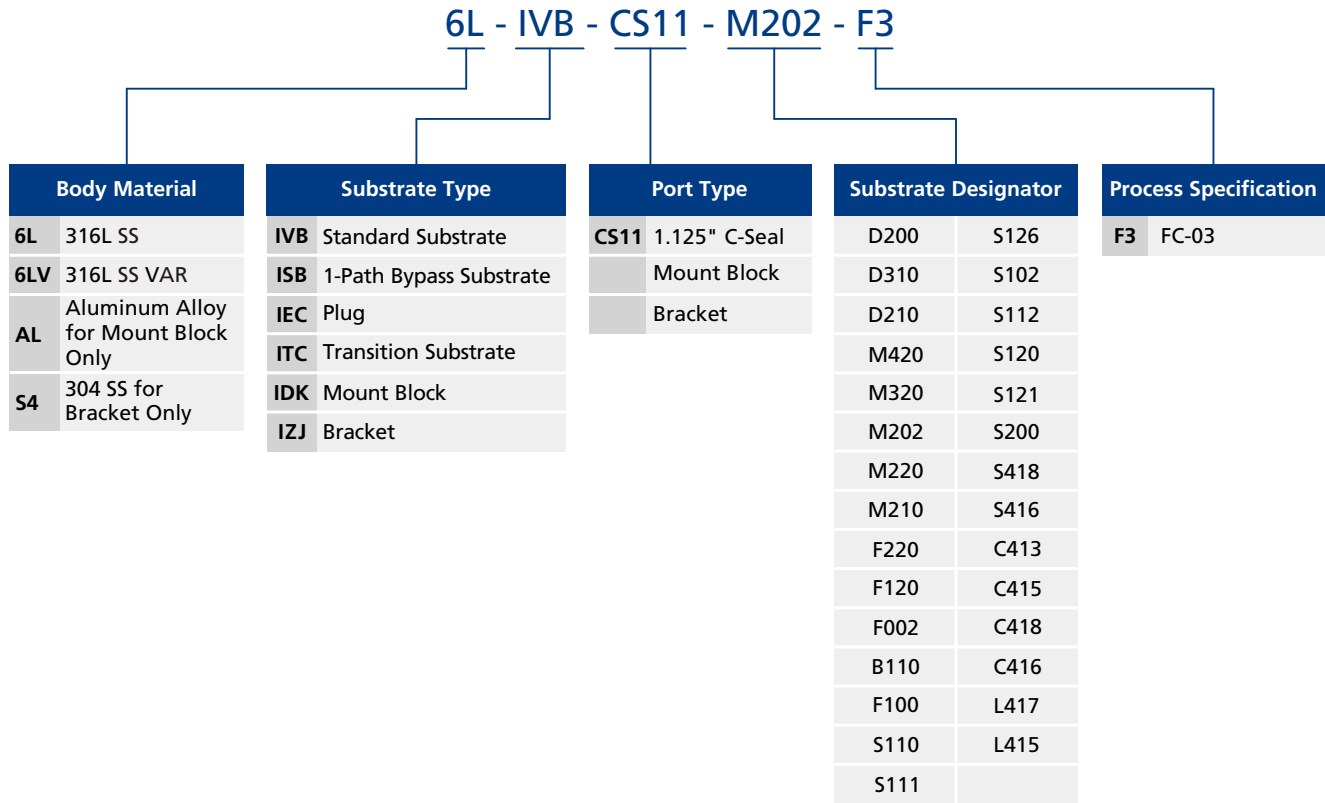
Ordering Number: S4-IZJ-L415-F3

Unit: mm



Fittings
Valves
Regulators
Filters
Tubing
Integrated Systems
Other Products
Technical Information

## Ordering Number Description



**Notes:**

- "Ordering Number Description" is a reference to understand the combination rules of FITOK product part number. Not all combinations are available. Please contact FITOK Group or our authorized distributors if you have any requests.
- Brackets and mount blocks are only cleaned and packaged in accordance with FC-03.

- Fittings
- Valves
- Regulators
- Filters
- Tubing
- Integrated Systems
- Other Products
- Technical Information

# Parts

## Sealing Gaskets IWG Series

### Features

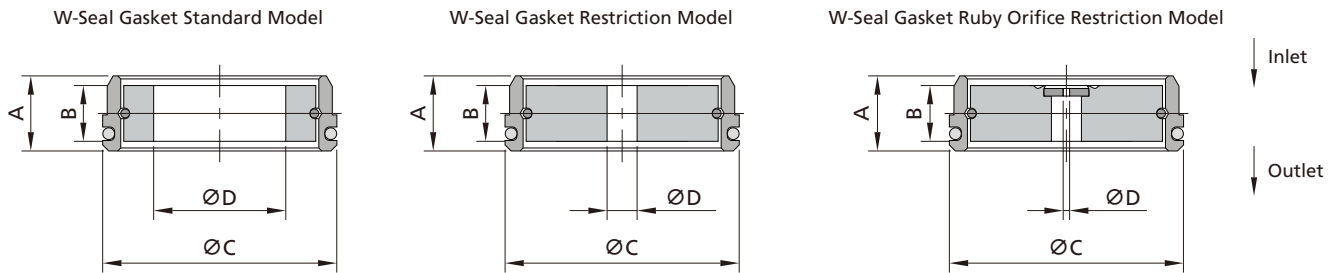
- ⊙ 1.125" and 1.5"
- ⊙ Sealing faces independent of components receiving external forces
- ⊙ Electropolished to a surface finish of Ra 5 μin. (0.13 μm) max.
- ⊙ Leak Rate (Helium):  $\leq 1 \times 10^{-9}$  std-cm<sup>3</sup>/s



### Process Specification

Item	Process Specification	Ultra High Purity (FC-03)
Material		316L SS, 316L SS VAR
Wetted Surface Roughness		Ra 5 μin. (0.13 μm)
Polishing Process		Electropolished

### Dimensions and Ordering Information

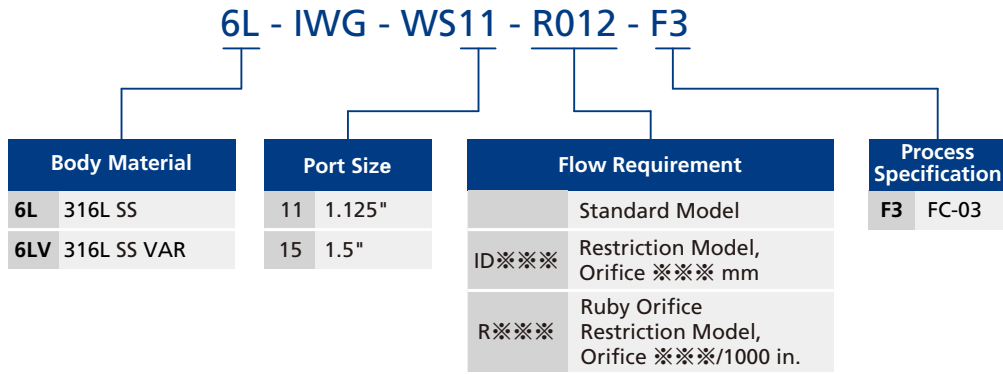


Basic Ordering Number	Port Type and Size	Dimensions, in. (mm)			
		A	B	C	D
-IWG-WS11-F3	1.125" W-Seal (Standard Model)	0.1 (2.5)	0.07 (1.86)	0.31 (7.8)	0.17 (4.4)
-IWG-WS11-ID***-F3 <sup>①</sup>	1.125" W-Seal (Restriction Model)	0.1 (2.5)	0.07 (1.86)	0.31 (7.8)	***
-IWG-WS11-R***-F3 <sup>②</sup>	1.125" W-Seal (Ruby Restriction Model)	0.1 (2.5)	0.07 (1.86)	0.31 (7.8)	***
-IWG-WS15-F3	1.5" W-Seal (Standard Model)	0.15 (3.8)	0.07 (1.9)	0.39 (10)	0.17 (4.4)

- ① ID\*\*\* indicates restriction orifice sizes, such as 0.3, which means an orifice size of Ø0.3 mm (only in mm).  
Example: 6L-IWG-WS11-ID0.3-F3. Orifice sizes are available from 0.05 mm to 4.35 mm in 0.05 mm increments.  
For more size options, please contact FITOK.
- ② a. R\*\*\* indicates ruby orifice sizes, such as 012, which means an orifice size of Ø0.012" (012/1000", only in inch).  
Example: 6L-IWG-WS11-R012-F3. Orifice sizes are available from 0.0015" to 0.035" in 0.0005" increments.  
For more size options, please contact FITOK.
- b. When using the ruby orifice restriction gasket, it is recommended that the ruby side faces the gas inlet to enable more stable and uniform flow.
- c. The maximum working pressure of the ruby orifice restriction gasket is 145 psig (10 bar). For use in working conditions with higher pressure requirements, please contact FITOK.

Fittings  
 Valves  
 Regulators  
 Filters  
 Tubing  
 Integrated Systems  
 Other Products  
 Technical Information

### Ordering Number Description



Note: "Ordering Number Description" is a reference to understand the combination rules of FITOK product part number. Not all combinations are available. Please contact FITOK Group or our authorized distributors if you have any requests.

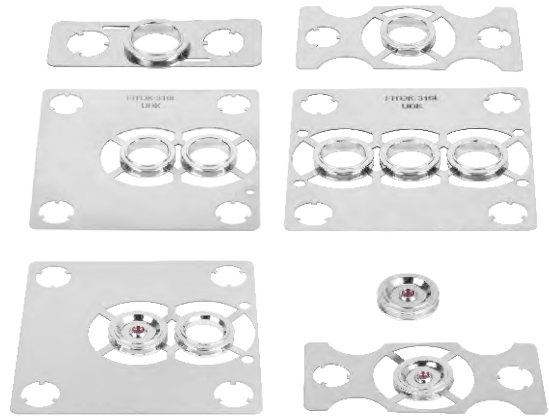
Fittings
Valves
Regulators
Filters
Tubing
Integrated Systems
Other Products
Technical Information

# Parts

## Sealing Gaskets ICG Series

### Features

- ⊙ 1.125" and 1.5"
- ⊙ Electropolished to a surface finish of Ra 5 μin. (0.13 μm) max.
- ⊙ Leak Rate (Helium):  $\leq 1 \times 10^{-9}$  std·cm<sup>3</sup>/s

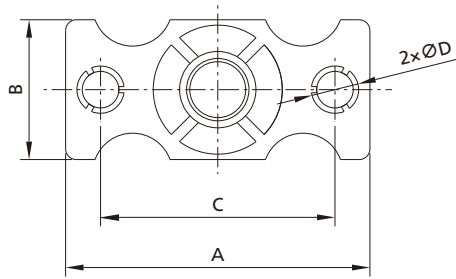


### Process Specification

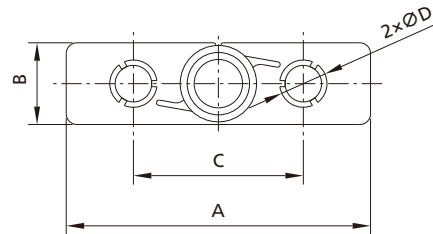
Item	Process Specification	Ultra High Purity (FC-03)
Material		316L SS, 316L SS VAR
Wetted Surface Roughness		Ra 5 μin. (0.13 μm)
Polishing Process		Electropolished

### Dimensions and Ordering Information

C-Seal Gasket Bracket 1P Standard Model



C-Seal Gasket Bracket 1P Special Size Model  
"-M-""-F-""-M86-"



Fittings

Valves

Regulators

Filters

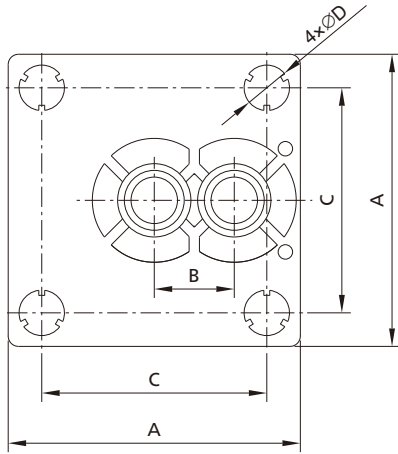
Tubing

Integrated Systems

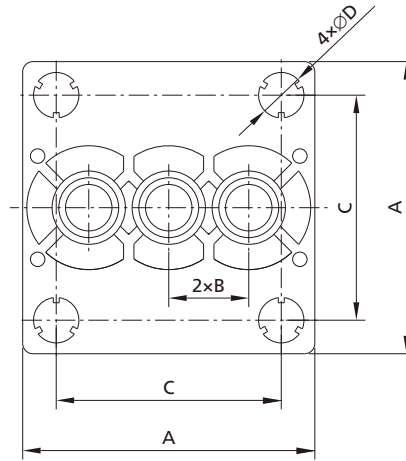
Other Products

Technical Information

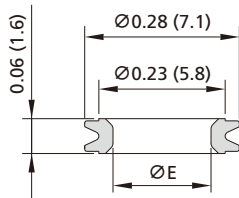
C-Seal Gasket Bracket 2P Standard Model



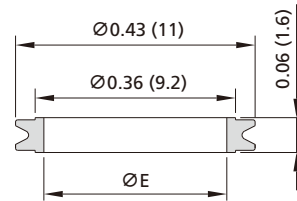
C-Seal Gasket Bracket 3P Standard Model



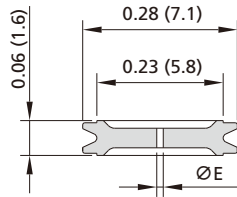
C-Seal Gasket Standard Model



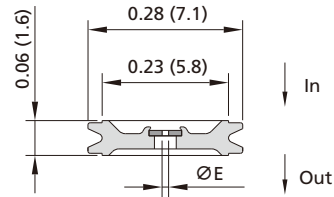
C-Seal Gasket High Flow Model



C-Seal Gasket Restriction Model (Only for CS11)



C-Seal Gasket Ruby Orifice Restriction Model (Only for CS11)



Fittings

Valves

Regulators

Filters

Tubing

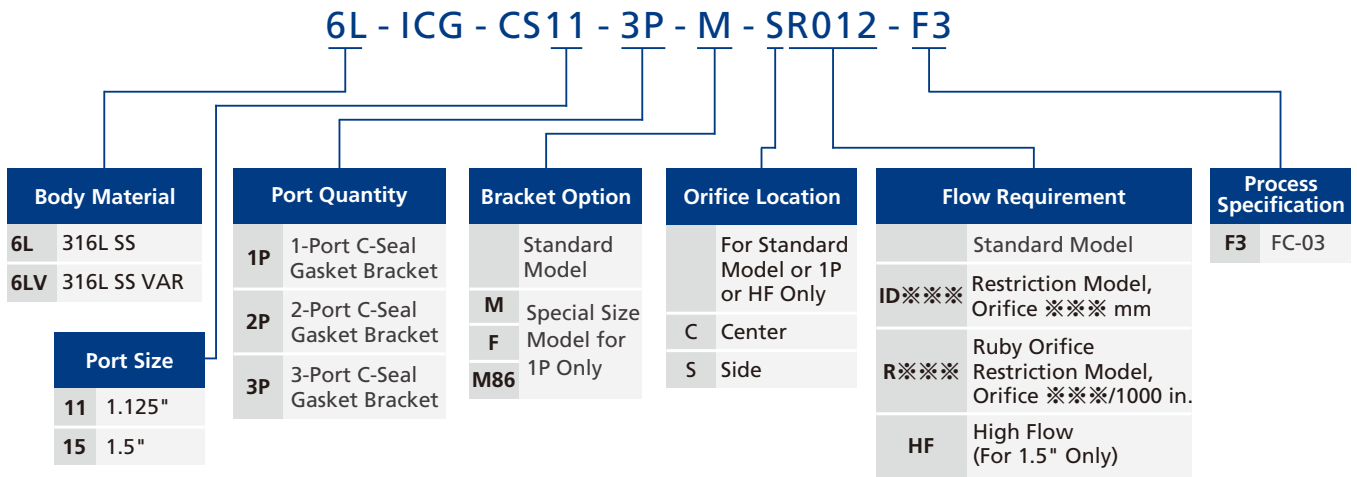
Integrated Systems

Other Products

Technical Information

	Basic Ordering Number	Port Type and Size	Dimensions, in. (mm)				
			A	B	C	D	E
Fittings	-ICG-CS11-1P-F3	1.125" C-Seal (Standard Model)	1.11 (28.3)	0.51 (13)	0.86 (21.80)	0.17 (4.4)	0.18 (4.5)
	-ICG-CS11-1P-M-F3	1.125" C-Seal (Special Size Model)	1.11 (28.3)	0.30 (7.6)	0.62 (15.85)	0.17 (4.4)	0.18 (4.5)
	-ICG-CS11-1P-F-F3	1.125" C-Seal (Special Size Model)	1.11 (28.3)	0.30 (7.6)	0.56 (14.27)	0.17 (4.4)	0.18 (4.5)
Valves	-ICG-CS11-1P-M86-F3	1.125" C-Seal (Special Size Model)	0.85 (21.6)	0.30 (7.6)	0.62 (15.85)	0.17 (4.4)	0.18 (4.5)
	-ICG-CS11-1P-ID***-F3 <sup>①</sup>	1.125" C-Seal (Restriction Model)	1.11 (28.3)	0.51 (13)	0.86 (21.8)	0.17 (4.4)	***
	-ICG-CS11-1P-R***-F3 <sup>②</sup>	1.125" C-Seal (Ruby Restriction Model)	1.11 (28.3)	0.51 (13)	0.86 (21.8)	0.17 (4.4)	***
	-ICG-CS11-2P-F3	1.125" C-Seal (Standard Model)	1.11 (28.3)	0.31 (7.75)	0.86 (21.8)	0.17 (4.4)	0.18 (4.5)
	-ICG-CS11-2P-CID***-F3 <sup>①</sup>	1.125" C-Seal (Restriction Model)	1.11 (28.3)	0.31 (7.75)	0.86 (21.8)	0.17 (4.4)	***
Regulators	-ICG-CS11-2P-SR***-F3 <sup>②</sup>	1.125" C-Seal (Ruby Restriction Model)	1.11 (28.3)	0.31 (7.75)	0.86 (21.8)	0.17 (4.4)	***
	-ICG-CS11-3P-F3	1.125" C-Seal (Standard Model)	1.11 (28.3)	0.31 (7.75)	0.86 (21.8)	0.17 (4.4)	0.18 (4.5)
	-ICG-CS11-3P-SID***-F3 <sup>①</sup>	1.125" C-Seal (Restriction Model)	1.11 (28.3)	0.31 (7.75)	0.86 (21.8)	0.17 (4.4)	***
	-ICG-CS11-3P-CR***-F3 <sup>②</sup>	1.125" C-Seal (Ruby Restriction Model)	1.11 (28.3)	0.31 (7.75)	0.86 (21.8)	0.17 (4.4)	***
Filters	-ICG-CS15-1P-F3	1.5" C-Seal (Standard Model)	1.48 (37.6)	0.51 (13)	1.18 (30.2)	0.2 (5.2)	0.18 (4.5)
	-ICG-CS15-2P-F3	1.5" C-Seal (Standard Model)	1.48 (37.6)	0.31 (7.75)	1.18 (30.2)	0.2 (5.2)	0.18 (4.5)
	-ICG-CS15-3P-F3	1.5" C-Seal (Standard Model)	1.48 (37.6)	0.31 (7.75)	1.18 (30.2)	0.2 (5.2)	0.18 (4.5)
	-ICG-CS15-1P-HF-F3	1.5" C-Seal (High Flow Model)	1.48 (37.6)	0.52 (13.2)	1.18 (30.2)	0.2 (5.2)	0.33 (8.4)
	-ICG-CS15-2P-HF-F3	1.5" C-Seal (High Flow Model)	1.48 (37.6)	0.46 (11.6)	1.18 (30.2)	0.2 (5.2)	0.33 (8.4)
	-ICG-CS15-3P-HF-F3	1.5" C-Seal (High Flow Model)	1.48 (37.6)	0.46 (11.6)	1.18 (30.2)	0.2 (5.2)	0.33 (8.4)
Tubing	<p>① ID*** indicates restriction orifice sizes, such as 0.3, which means an orifice size of Ø0.3 mm (only in mm).                      Example: 6L-ICG-CS11-1P-ID0.3-F3. Orifice sizes are available from 0.05 mm to 4.45 mm in 0.05 mm increments.                      For more size options, please contact FITOK.</p> <p>② a. R*** indicates ruby orifice sizes, such as 012, which means an orifice size of Ø0.012" (012/1000", only in inch).                      Example: 6L-ICG-CS11-1P-R012-F3. Orifice sizes are available from 0.0015" to 0.035" in 0.0005" increments.                      For more size options, please contact FITOK.</p> <p>b. When using the ruby orifice restriction gasket, it is recommended that the ruby side faces the gas inlet to enable more stable and uniform flow.</p> <p>c. The maximum working pressure of the ruby orifice restriction gasket is 145 psig (10 bar). For use in working conditions with higher pressure requirements, please contact FITOK.</p>						
Integrated Systems							
Other Products							
Technical Information							

## Ordering Number Description



Note: "Ordering Number Description" is a reference to understand the combination rules of FITOK product part number. Not all combinations are available. Please contact FITOK Group or our authorized distributors if you have any requests.

Fittings
Valves
Regulators
Filters
Tubing
Integrated Systems
Other Products
Technical Information